

Mode-Auto-Changer Over

When the air conditioner is set to the Auto mode by remote controller, operation starts in the optimum mode from among the Heating, Cooling, Dry and Monitoring mode. During operation, the optimum mode is automatically switched in accordance with temperature changes. The temperature can be set between 64°F(18°C) and 86°F(30°C) in 2°F(1°C) steps.

When operation starts, indoor fan and outdoor fan are operated for around 3 minutes room temperature and outdoor temperature are sensed, and the operation mode is selected in accordance with the table below. **<Monitoring mode>**

TR : Room Temperature

Ts : Setting Temperature

(Table 1 : Operation mode selection table)

Room Temperature (TR)	Operation Mode
	Cooling
TR > Ts + 4 degrees F (+2C)	(Automatic dry)
Ts + 4 degrees F (+2C) > or = TR > or = -4degrees F	*Middle zone
TR < Ts - 4 degrees F (-2C)	Heating

*If it's Middle zone, operation mode of indoor unit is selected as below.

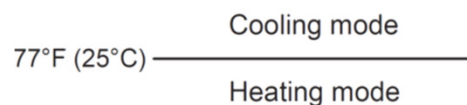
(1). Same operation mode is selected as outdoor unit.

If outdoor unit is operating in Cooling, Dry, and Heating mode, indoor unit will be operated by the same operation mode.

(2). Selected by the outdoor temperature.

If outdoor unit is operating in other than Cooling, Dry, and Heating mode, indoor unit will be operated according to the outdoor temperature as below.

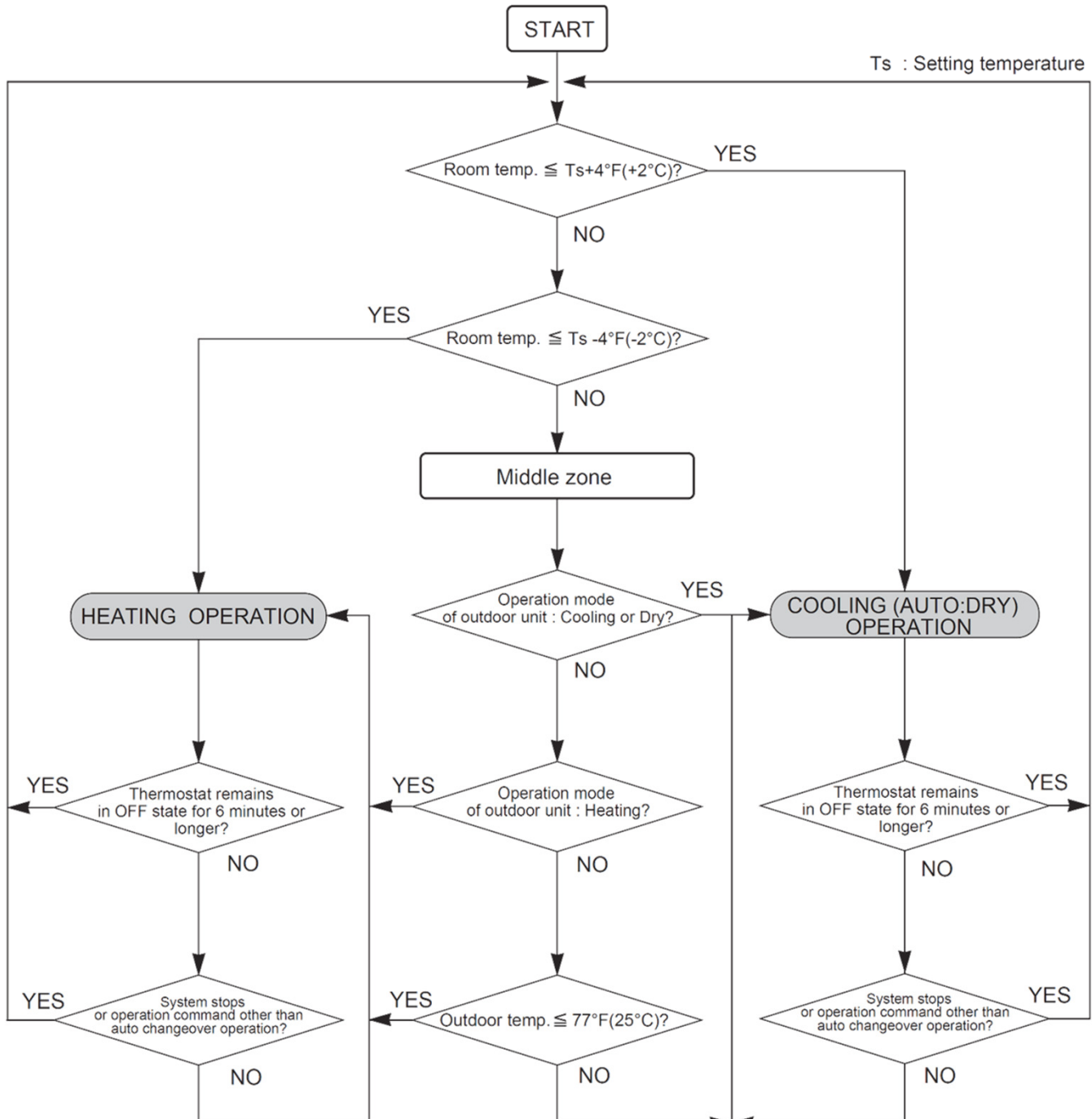
(Fig. 1 : Outdoor temperature zone selection)



When Heating was selected at the same operation as HEATING OPERATION of
 When the compressor is stopped for 6 consecutive minutes by the temperature control function after the Cooling(Auto:Dry) or Heating mode was selected at above, operation is switched to Monitoring and the operation mode is selected again.

Mode-Auto-Changer Over

■ AUTO CHANGEOVER operation flow chart



Disclaimer:

In order to perform some of these tests an electrical and/or refrigerant license is required. We strongly advise to check the Service manual for more detailed explanation. If you are not sure about these recommendations please contact us at 866-952-8324.