

Fuse Holder Installation

Part # K0600384029
Fuse 24RML1
10A N4 TLC



Part # K9378287006
Fuse Holder Bracket
24RML1 ABS SA32

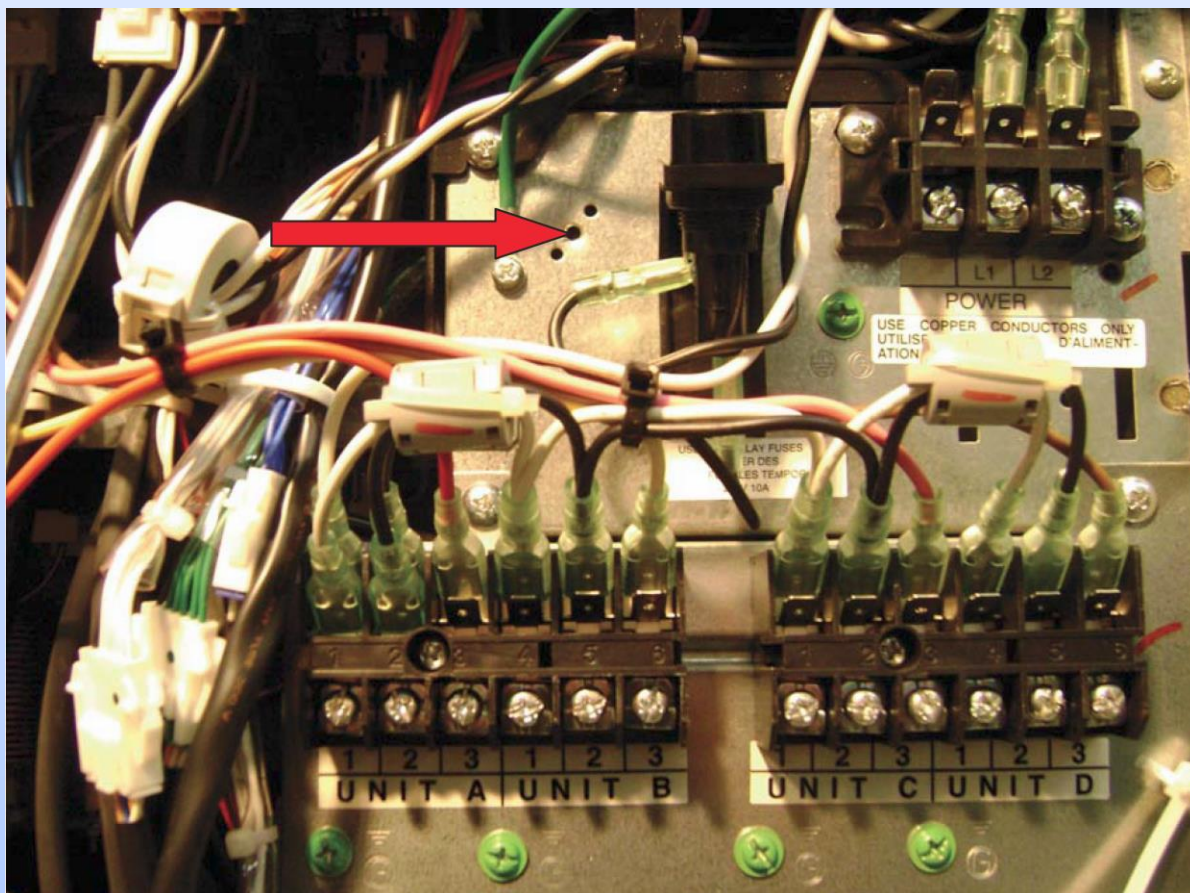


Part # K0500802111
Fuse Holder
AOU24RML1 F-130
AOU36RML1



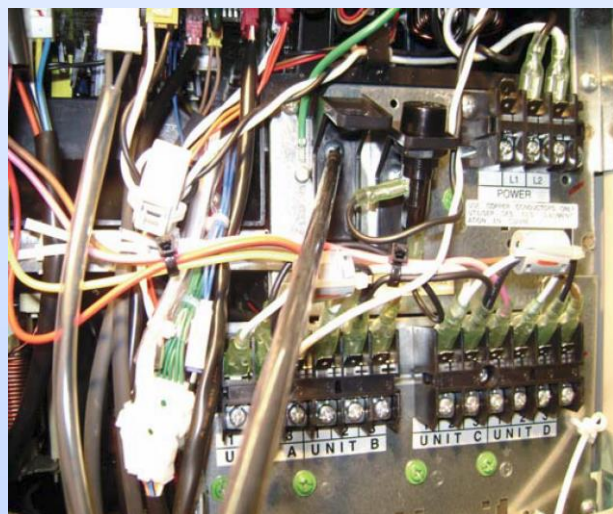
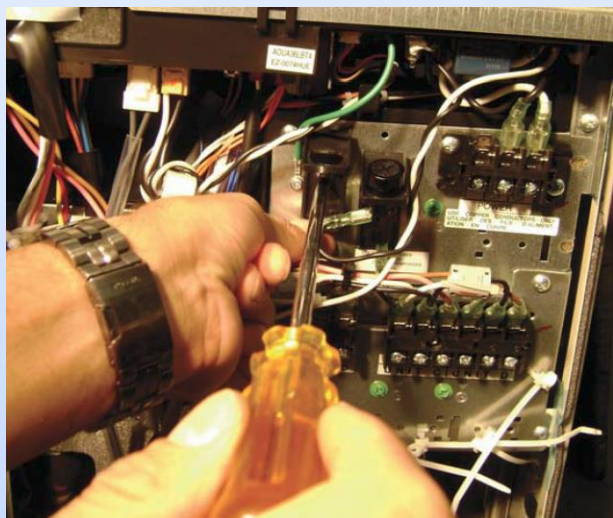
Fuse Holder Installation

Fuse Holder Bracket Mounting Point Location

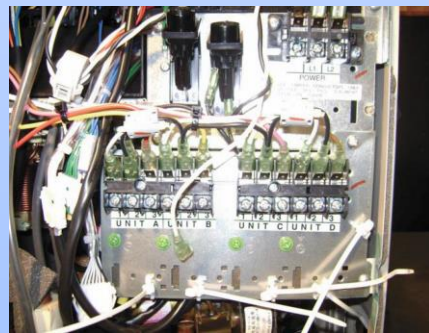


Fuse Holder Installation

Mounting Fuse Holder Bracket



Mounting Fuse Holder



Fuse Holder Installation

Terminal Block A

- Locate terminal block 'A' Fig. 1
- Remove line wire from terminal 1. (White wire) Fig. 2



Fig.1

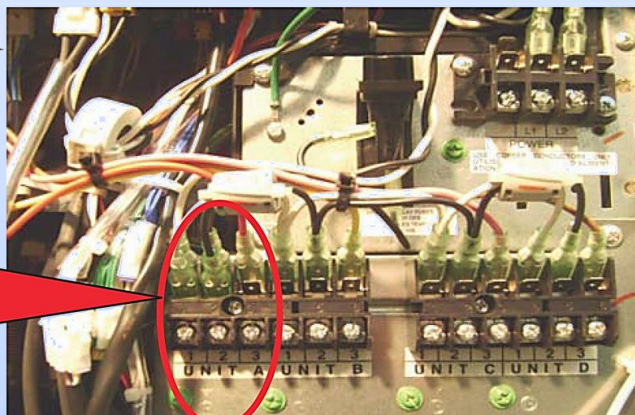
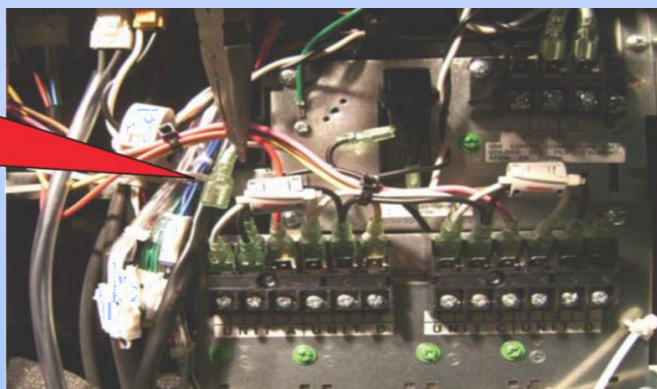


Fig.2



Fuse Holder Installation

Wire Connection

- Connect the black wire from the fuse holder to the bottom of the fuse holder. See Fig. 1.1
- Connect the other end of the black wire to the terminal number 1 of terminal block 'A'. On the factory wired side. See Fig. 1.2

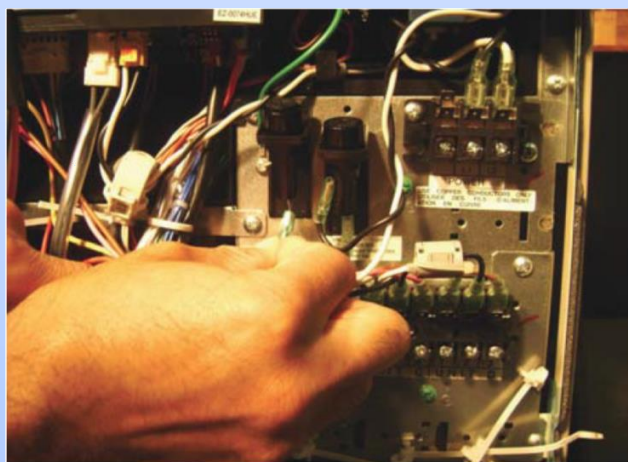


Fig. 1.1

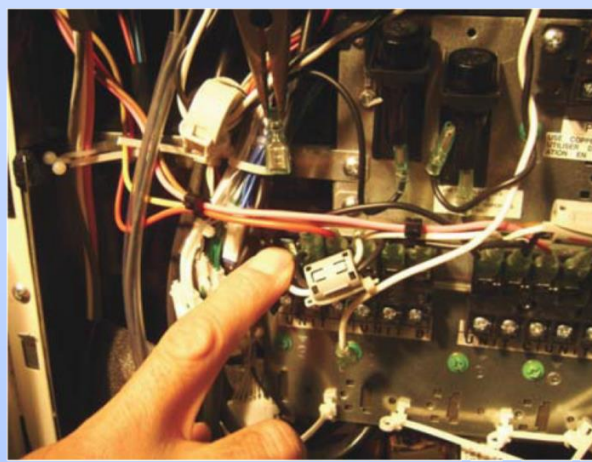


Fig. 1.2

Fuse Holder Installation

Factory Side Wiring Connection

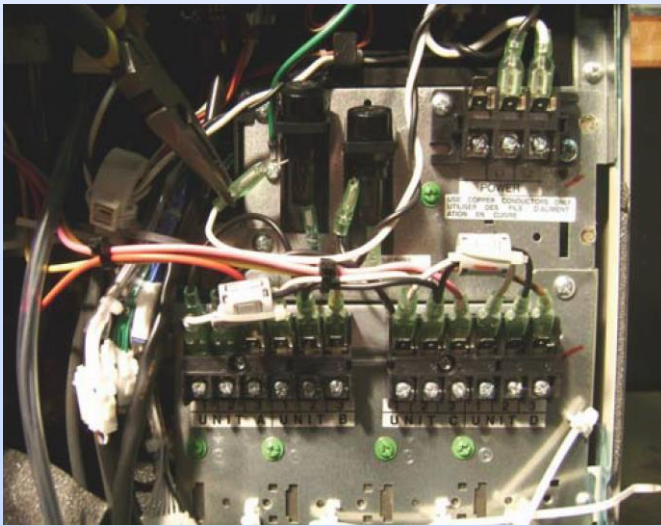


Fig. 1.3

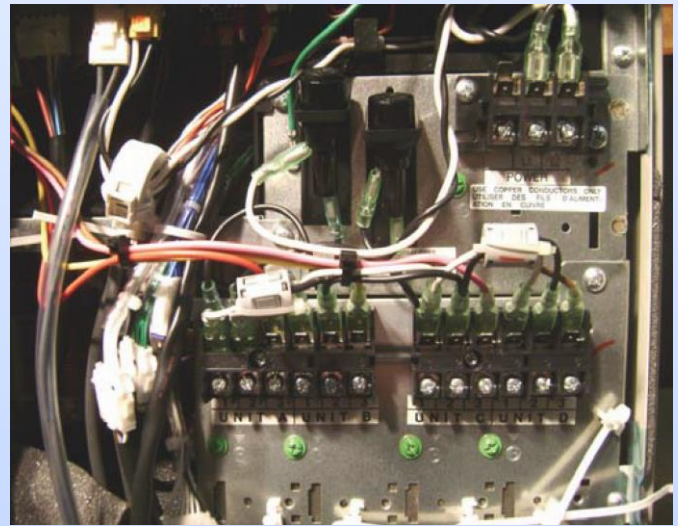


Fig. 1.4

- Connect the white wire on the factory side to the side terminal of the fuse holder, see Fig. 1.3.
- Fig. 1.4 shows a completed fuse holder installation.