

# WARNING

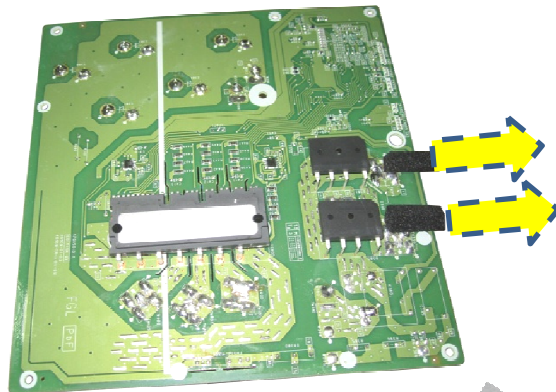
## INSTALLATION INSTRUCTIONS

### Included in this KIT D:

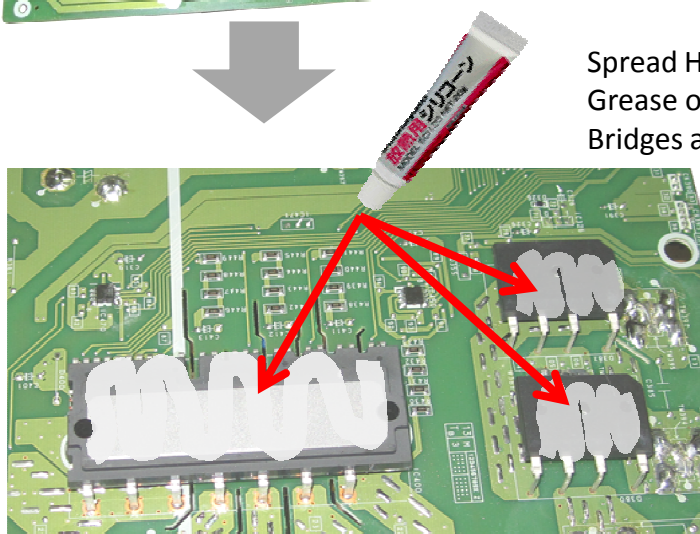
- K0700095047 Screw M4 L16-- 2pcs.
- K0700095054 Screw M3 L14-- 2pcs.
- K0000036795 Heat Sink Grease 1pc.

### Applies to:

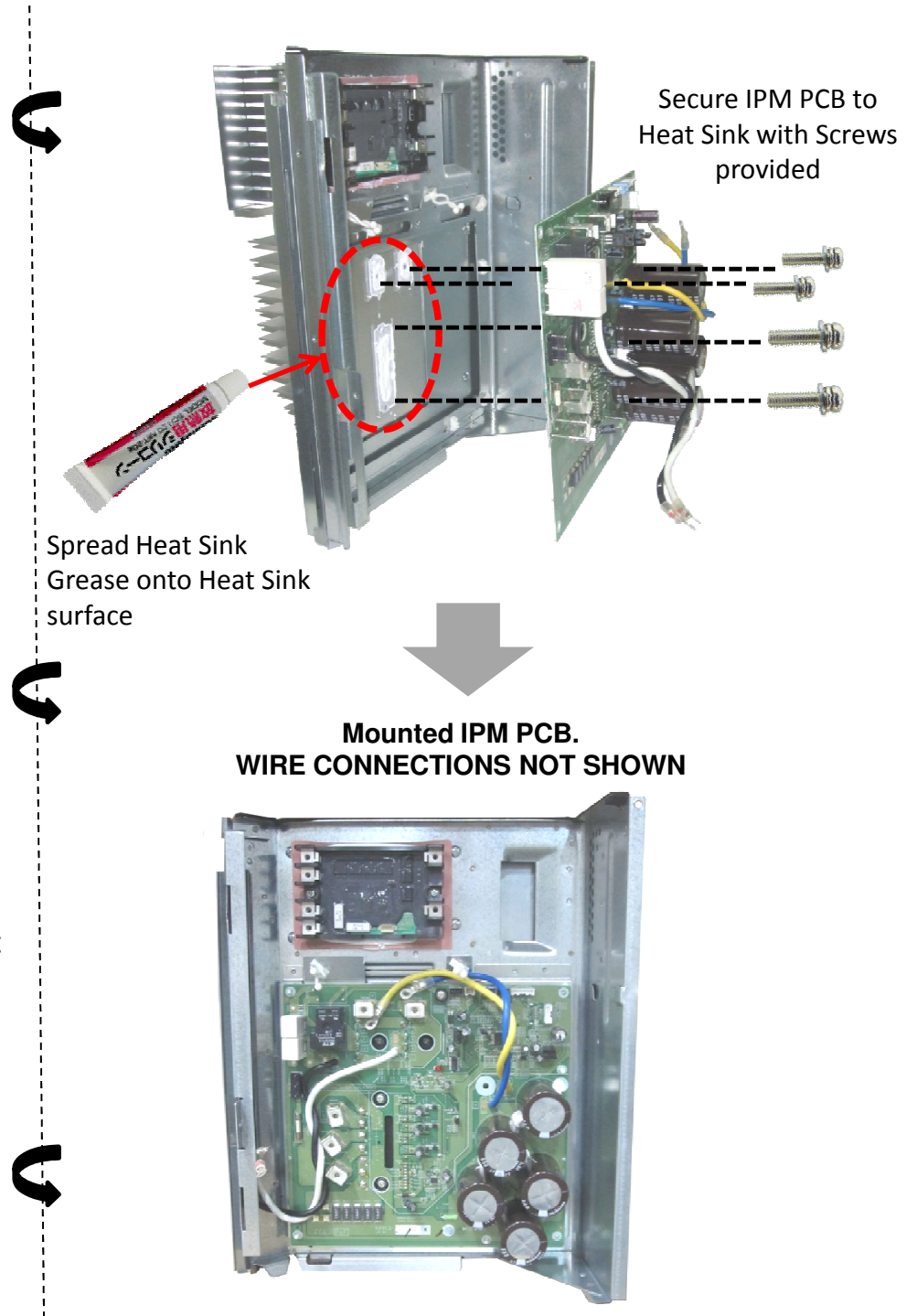
- K9708497013 IPM PCB 48RLXFZ#
- K9708497044 IPM PCB 48RLXFZ1



Remove Cushions off Diode Bridges Before Installing PCB



Spread Heat Sink Grease onto Diode Bridges and ACTPM IC



Secure IPM PCB to Heat Sink with Screws provided

Spread Heat Sink Grease onto Heat Sink surface

Mounted IPM PCB.  
WIRE CONNECTIONS NOT SHOWN