

SERVICE BULLETIN



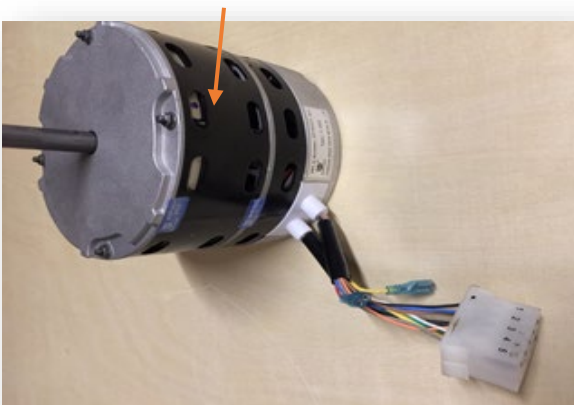
SA – 032 Rev. 1

DATE: July 30, 2021
TO: All Service and Parts Managers
SUBJECT: Broad Ocean DM3 Motor Controllers ***UPDATE on page 2***

Analysis of returned motors has shown that most replacements are the result of failures in the motor controller and not the motor body. As a result, we are releasing the controllers and controllerless motors separately through service parts.

As inventory is consumed of complete motor assemblies all Broad Ocean DM3 motors will sub to programmed controllers and the motor assemblies will no longer be available. New parts catalogs will list the controller and controllerless motor as separate parts. In older parts catalogs the existing Broad Ocean motor will be substituted to the appropriate controller. Refer to the parts catalog for the controllerless motor on the rare occasion one is required.

Complete Motor Assembly



Controllerless Motor



Programmed Controller



T: 888-593-9988 | F: 713-316-5541

Produced by Goodman Business Unit Technical Services | 19001 Kermier Road | Waller, TX 77484

All rights reserved. Goodman products are subject to continuous improvements. Goodman reserves the right to modify information in the bulletin without notice and without incurring any obligations. Amana® is a registered trademark of Maytag Corporation or its related companies and is used under license. All rights reserved.

SERVICE BULLETIN



*****UPDATE July 2021*****

The 5-pin PCB has been removed from the original DM3 controller and replaced with electronics below the controller “potting” material (see Image 1). The 5-pin connector from the motor is no longer utilized. A dummy plug is left in place to accommodate the connector and keep the wires organized (see Image 2). The motor and controller come apart by removing the 2 screws from the bottom. The motor to controller connections are a 3-pin plug and a 5-pin plug. On the controllerless motor replacement, the 5-pin plug snaps in to a dummy plug located on the controller (see Image 3).

Refer to the product service manual for diagnostic and replacement procedures.

Image 1

Old controller with 5-Pin Plug



Image 2

NEW controller with Dummy Plug

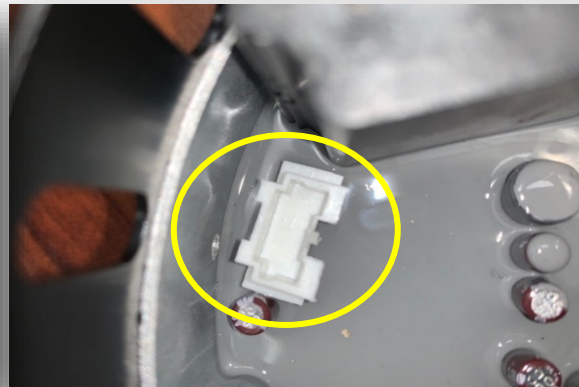
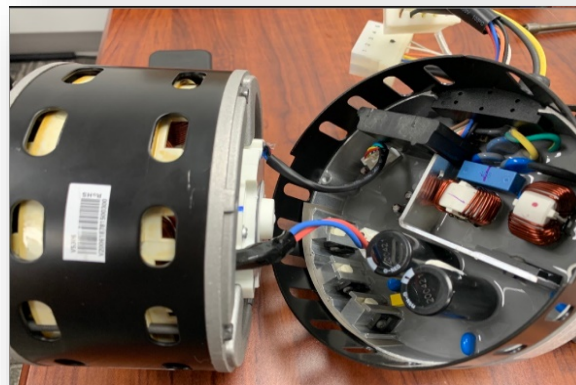


Image 3

**New controller plugged
into pre-existing motor.**



T: 888-593-9988 | F: 713-316-5541

Produced by Goodman Business Unit Technical Services | 19001 Kermier Road | Waller, TX 77484

All rights reserved. Goodman products are subject to continuous improvements. Goodman reserves the right to modify information in the bulletin without notice and without incurring any obligations. Amana® is a registered trademark of Maytag Corporation or its related companies and is used under license. All rights reserved.